

\$741,900 - 11019 10 Avenue, Edmonton

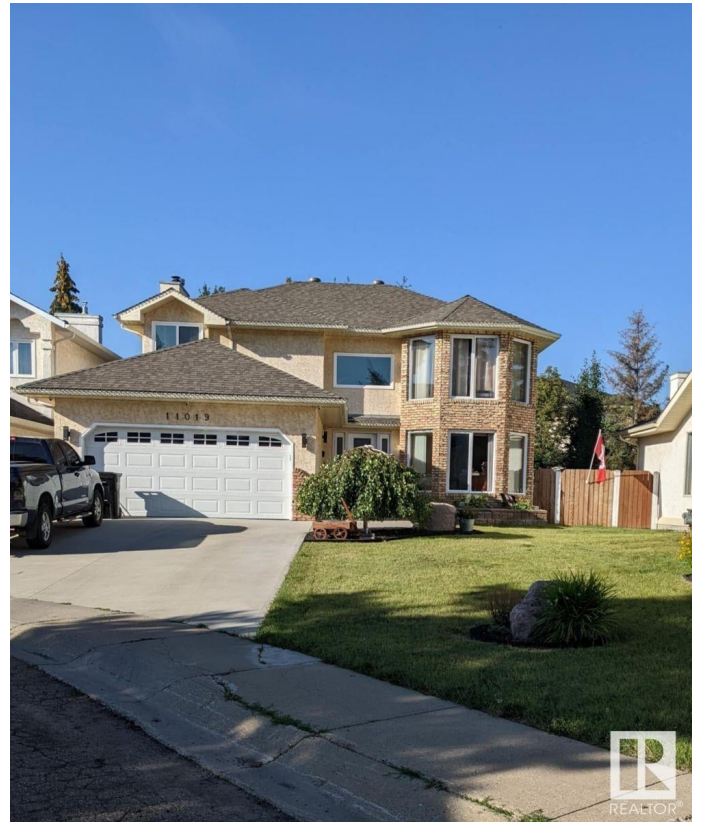
MLS® #E4423142

\$741,900

5 Bedroom, 4.00 Bathroom, 2,420 sqft
Single Family on 0.00 Acres

Twin Brooks, Edmonton, AB

Visit the Listing Brokerage (and/or listing REALTOR®) website to obtain additional information. This Landmark built 2-storey home located in Blackmud Creek Estates / Twin Brooks should not be missed. Second floor has a large master bedroom, walk-in closet, 3-pc bath with loads of counter space & a separate make-up vanity. Two more spacious bedrooms, one bedroom having another walk-in closet. Great Room with a closet. 4-pc bath. Linen closet with laundry shoot to the basement. Small closet in hallway for built in central vac storage. Main floor has a 3-pc bath, formal dining room, formal living room, kitchen with island, family room with wood burning fireplace, nook, large storage closet and a sun room leading to back deck and yard. Basement has 2 extra rooms. 3-pc bath, mechanical room, large unfinished storage area, under stair storage closet, & laundry room equipped with cupboards and sink. Garage is attached, heated double oversized garage. Large backyard, designed for easy maintenance a newer shed.



Built in 1988

Essential Information

MLS® #	E4423142
Price	\$741,900

Bedrooms	5
Bathrooms	4.00
Full Baths	4
Square Footage	2,420
Acres	0.00
Year Built	1988
Type	Single Family
Sub-Type	Detached Single Family
Style	2 Storey
Status	Active

Community Information

Address	11019 10 Avenue
Area	Edmonton
Subdivision	Twin Brooks
City	Edmonton
County	ALBERTA
Province	AB
Postal Code	T6J 6N4

Amenities

Amenities	Off Street Parking, Deck, See Remarks
Parking	Double Garage Attached

Interior

Interior Features	ensuite bathroom
Appliances	Dishwasher-Built-In, Microwave Hood Fan, Oven-Built-In, Refrigerator, Storage Shed, Vacuum Systems
Heating	Forced Air-1, In Floor Heat System, Natural Gas
Stories	2
Has Basement	Yes
Basement	Full, Partially Finished

Exterior

Exterior	Wood, Asphalt, Brick, Stucco
Exterior Features	Cul-De-Sac, Fenced, Fruit Trees/Shrubs, Low Maintenance Landscape, Public Transportation, Schools
Roof	Asphalt Shingles
Construction	Wood, Asphalt, Brick, Stucco

Foundation Concrete Perimeter

Additional Information

Date Listed February 27th, 2025

Days on Market 37

Zoning Zone 16



DATA IS DEEMED RELIABLE BUT IS NOT GUARANTEED ACCURATE BY THE REALTORS® ASSOCIATION OF EDMONTON. COPYRIGHT 2025 BY THE REALTORS® ASSOCIATION OF EDMONTON. ALL RIGHTS RESERVED. Trademarks are owned or controlled by the Canadian Real Estate Association (CREA) and identify real estate professionals who are members of CREA (REALTOR®, REALTORS®) and/or the quality of services they provide (MLS®, Multiple Listing Service®)

Listing information last updated on April 4th, 2025 at 10:17pm MDT