

Courtesy Of Dragic Janjic Of Real Broker

# \$178,888 - 1007 12121 Jasper Avenue, Edmonton

MLS® #E4424682

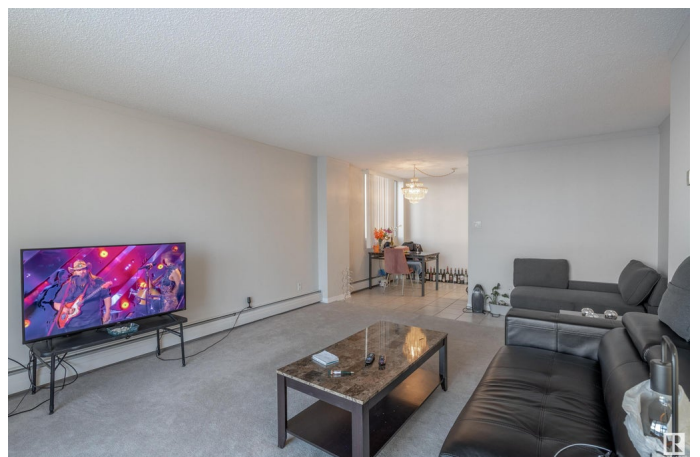
**\$178,888**

1 Bedroom, 1.00 Bathroom, 692 sqft  
Condo / Townhouse on 0.00 Acres

W&A@hkw&ant&win, Edmonton, AB

## STUNNING 10TH FLOOR CORNER CONDO | PANORAMIC RIVER VALLEY VIEWS!

Experience luxury urban living with breathtaking river valley vistas from this pristine high-rise corner unit. Prime downtown location places you steps from trendy restaurants, Brewery District shopping, cultural galleries, University of Alberta campus, and scenic river valley trails for outdoor enthusiasts! This bright, open-concept residence features expansive balcony showcasing magnificent south/west views—perfect for morning coffee or evening sunsets. Modern kitchen with sleek white cabinetry seamlessly connects to elegant dining space and flows into spacious living area designed for relaxation while enjoying premium cityscape panoramas. Generously-sized primary bedroom retreat offers ample space for king-size furniture, while updated 4-piece bathroom completes this turnkey property. Recently renovated building amenities include modern fitness room and stylish reimagined lobby entrance. Condo fee includes all utilities!



Built in 1975

## Essential Information

MLS® #	E4424682
Price	\$178,888

Bedrooms	1
Bathrooms	1.00
Full Baths	1
Square Footage	692
Acres	0.00
Year Built	1975
Type	Condo / Townhouse
Sub-Type	Lowrise Apartment
Style	Single Level Apartment
Status	Active

### Community Information

Address	1007 12121 Jasper Avenue
Area	Edmonton
Subdivision	WÃ©hkwÃ©ntÃ©win
City	Edmonton
County	ALBERTA
Province	AB
Postal Code	T5N 3X7

### Amenities

Amenities	Carbon Monoxide Detectors, Closet Organizers, Detectors Smoke, No Animal Home, No Smoking Home, Secured Parking, Social Rooms, See Remarks
Parking Spaces	1
Parking	Heated, Underground

### Interior

Appliances	Dishwasher-Built-In, Refrigerator, Stove-Electric
Heating	Hot Water, Natural Gas
# of Stories	17
Stories	1
Has Basement	Yes
Basement	None, No Basement

### Exterior

Exterior	Concrete, Composition
Exterior Features	Backs Onto Park/Trees, Flat Site, Fruit Trees/Shrubs, Golf Nearby, Landscaped, Ravine View, Recreation Use, River Valley View, River

	View
Roof	Tar & Gravel
Construction	Concrete, Composition
Foundation	Concrete Perimeter

### School Information

Elementary	W&hkw&ant&win/Oliver School
Middle	W&hkw&ant&win/Oliver School
High	Victoria

### Additional Information

Date Listed	March 7th, 2025
Days on Market	29
Zoning	Zone 12
Condo Fee	\$641

DATA IS DEEMED RELIABLE BUT IS NOT GUARANTEED ACCURATE BY THE REALTORS® ASSOCIATION OF EDMONTON. COPYRIGHT 2025 BY THE REALTORS® ASSOCIATION OF EDMONTON. ALL RIGHTS RESERVED. Trademarks are owned or controlled by the Canadian Real Estate Association (CREA) and identify real estate professionals who are members of CREA (REALTOR®, REALTORS®) and/or the quality of services they provide (MLS®, Multiple Listing Service®)

Listing information last updated on April 4th, 2025 at 11:17pm MDT