

\$125,000 - 105 355 Woodbridge Way, Sherwood Park

MLS® #E4425675

\$125,000

1 Bedroom, 1.00 Bathroom, 600 sqft
Condo / Townhouse on 0.00 Acres

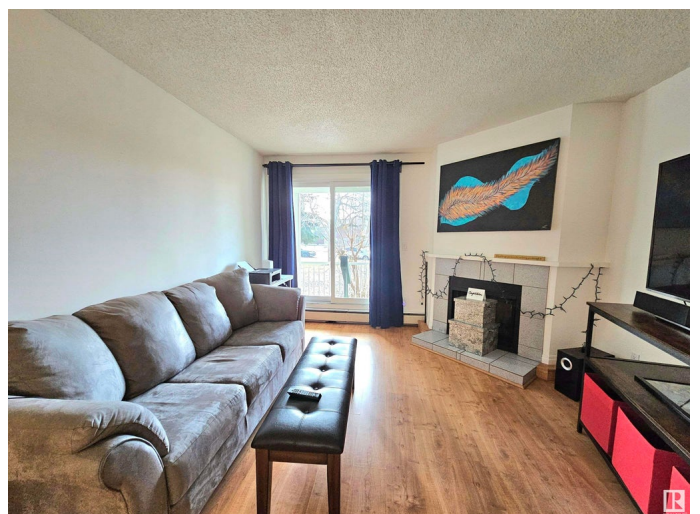
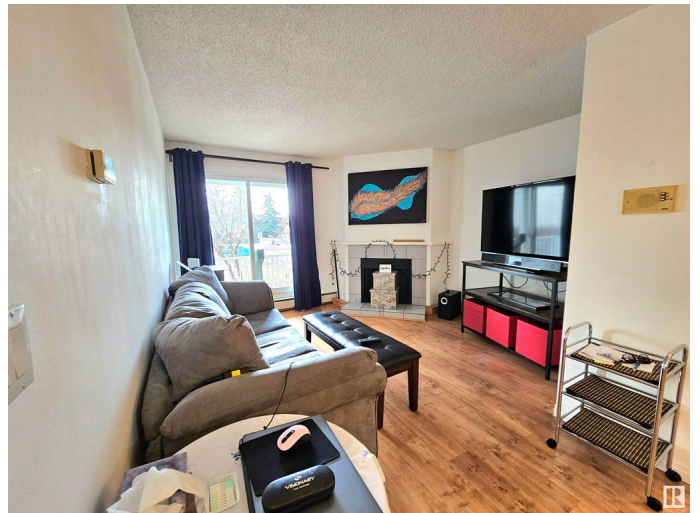
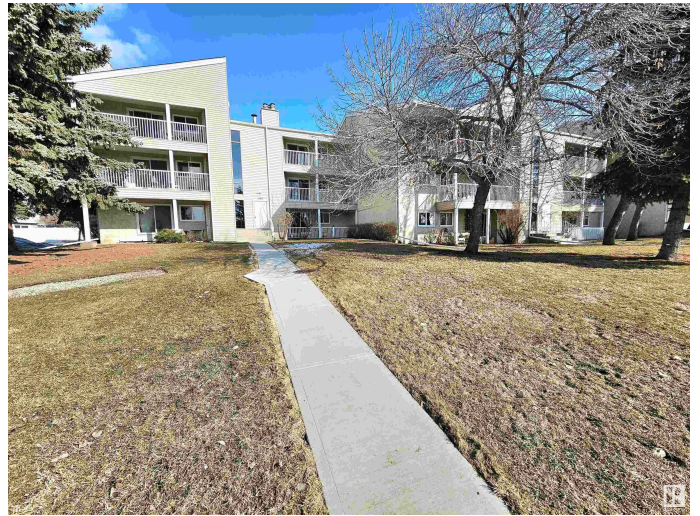
Woodbridge Farms, Sherwood Park, AB

This ground-floor, south-facing 1-bedroom condo in Woodbridge Farms is a perfect starter home or investment. Enjoy a bright living space with a cozy wood-burning fireplace, a spacious bedroom, and a private walkout patio with scenic park views. The unit offers indoor and outdoor storage, an energized parking stall near the entrance, and convenient laundry just steps away. Woodbridge Manor is a well-managed, pet-friendly complex, with condo fees covering heat, water, and sewer. Ideally located across from Woodbridge Farms Elementary, and close to walking trails, playgrounds, golf, transit, and all amenities. A fantastic opportunityâ€™donâ€™t miss out!

Built in 1979

Essential Information

MLS® #	E4425675
Price	\$125,000
Bedrooms	1
Bathrooms	1.00
Full Baths	1
Square Footage	600
Acres	0.00
Year Built	1979
Type	Condo / Townhouse



Sub-Type	Lowrise Apartment
Style	Single Level Apartment
Status	Active

Community Information

Address	105 355 Woodbridge Way
Area	Sherwood Park
Subdivision	Woodbridge Farms
City	Sherwood Park
County	ALBERTA
Province	AB
Postal Code	T8A 4G3

Amenities

Amenities	Parking-Plug-Ins, Patio, See Remarks
Parking	Stall

Interior

Appliances	Dishwasher-Built-In, Hood Fan, Refrigerator, Stove-Electric, Window Coverings
Heating	Hot Water, Natural Gas
Fireplace	Yes
Fireplaces	Mantel, Tile Surround
# of Stories	3
Stories	1
Has Basement	Yes
Basement	None, No Basement

Exterior

Exterior	Wood, Vinyl
Exterior Features	Playground Nearby, Public Transportation, Schools, Shopping Nearby, Sloping Lot, Partially Fenced
Roof	Asphalt Shingles
Construction	Wood, Vinyl
Foundation	Concrete Perimeter

Additional Information

Date Listed	March 14th, 2025
Days on Market	21

Zoning	Zone 25
Condo Fee	\$375

DATA IS DEEMED RELIABLE BUT IS NOT GUARANTEED ACCURATE BY THE REALTORS® ASSOCIATION OF EDMONTON. COPYRIGHT 2025 BY THE REALTORS® ASSOCIATION OF EDMONTON. ALL RIGHTS RESERVED. Trademarks are owned or controlled by the Canadian Real Estate Association (CREA) and identify real estate professionals who are members of CREA (REALTOR®, REALTORS®) and/or the quality of services they provide (MLS®, Multiple Listing Service®)

Listing information last updated on April 4th, 2025 at 12:02pm MDT