

\$374,800 - 13420 134 Street, Edmonton

MLS® #E4427769

\$374,800

4 Bedroom, 1.50 Bathroom, 945 sqft

Single Family on 0.00 Acres

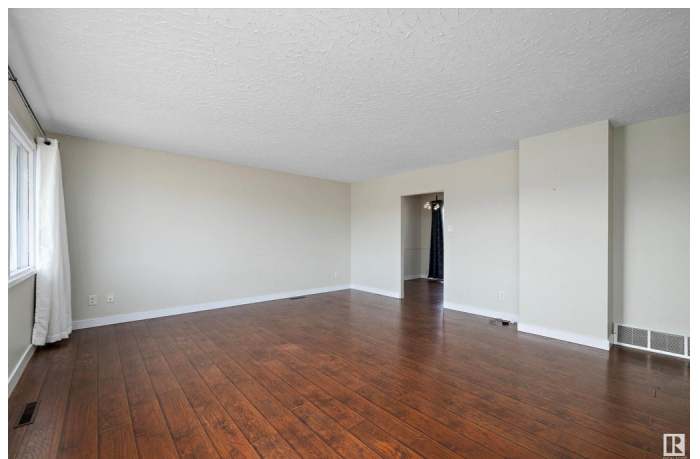
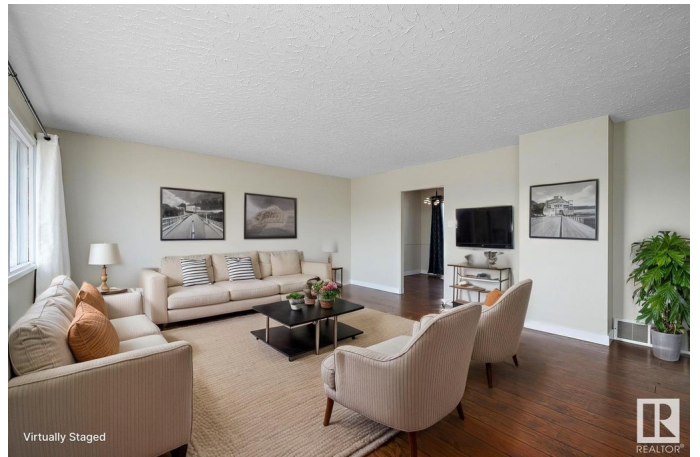
Wellington, Edmonton, AB

Welcome to this charming and well-loved home, perfectly located across from an elementary school and just minutes from all the essentials! The fully renovated main floor offers 3 bright bedrooms, a stylish 4-piece bath, and a spacious living room—perfect for game nights or cozy movie marathons. Downstairs, there’s even more space to enjoy with a huge rec room, a 4th bedroom, and room for a custom bathroom, plus the potential for a separate entrance! With over 1,800 sq. ft. of living space, there's plenty of room to make it your own. Step outside to a huge backyard, perfect for summer BBQs, with RV parking and an oversized single detached garage. Thoughtful updates over the years include a newer roof, windows, hot water tank, and fridge. Need a mortgage helper? The basement layout is ideal for a future legal or in-law suite. Don’t miss out on this fantastic home in an unbeatable location!

Built in 1958

Essential Information

MLS® #	E4427769
Price	\$374,800
Bedrooms	4
Bathrooms	1.50
Full Baths	1



Half Baths	1
Square Footage	945
Acres	0.00
Year Built	1958
Type	Single Family
Sub-Type	Detached Single Family
Style	Bungalow
Status	Active

Community Information

Address	13420 134 Street
Area	Edmonton
Subdivision	Wellington
City	Edmonton
County	ALBERTA
Province	AB
Postal Code	T5L 1W4

Amenities

Amenities	Off Street Parking, On Street Parking, Deck, No Smoking Home, Parking-Extra, R.V. Storage, Vinyl Windows
Parking	Over Sized, Single Garage Detached

Interior

Appliances	Dishwasher-Built-In, Dryer, Microwave Hood Fan, Refrigerator, Stove-Electric, Washer, Window Coverings
Heating	Forced Air-1, Natural Gas
Stories	2
Has Basement	Yes
Basement	Full, Finished

Exterior

Exterior	Wood, Stucco, Vinyl
Exterior Features	Back Lane, Fenced, Playground Nearby, Schools, Shopping Nearby
Roof	Asphalt Shingles
Construction	Wood, Stucco, Vinyl
Foundation	Concrete Perimeter

School Information

Elementary	McArthur School
Middle	Rosslyn School
High	Ross Sheppard School

Additional Information

Date Listed March 27th, 2025

Days on Market 8

Zoning Zone 01

DATA IS DEEMED RELIABLE BUT IS NOT GUARANTEED ACCURATE BY THE REALTORS® ASSOCIATION OF EDMONTON. COPYRIGHT 2025 BY THE REALTORS® ASSOCIATION OF EDMONTON. ALL RIGHTS RESERVED. Trademarks are owned or controlled by the Canadian Real Estate Association (CREA) and identify real estate professionals who are members of CREA (REALTOR®, REALTORS®) and/or the quality of services they provide (MLS®, Multiple Listing Service®)

Listing information last updated on April 4th, 2025 at 6:02pm MDT