

Courtesy Of Jane Vu Of Real Broker

\$575,000 - 714 Lee Ridge Road, Edmonton

MLS® #E4427808

\$575,000

6 Bedroom, 3.50 Bathroom, 2,158 sqft

Single Family on 0.00 Acres

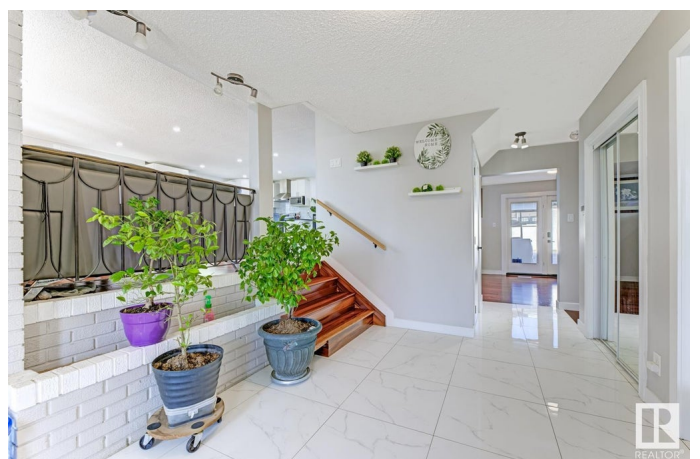
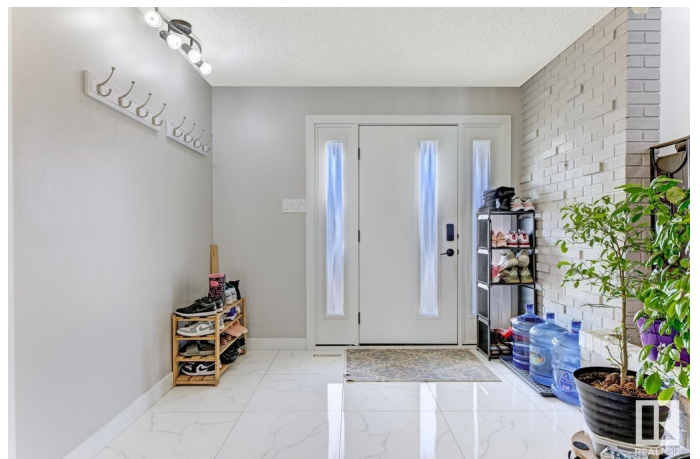
Lee Ridge, Edmonton, AB

This fully renovated 4-level split in Lee Ridge offers over 2,100 sq ft, 5 bedrooms, and 3.5 bathrooms - perfect for a growing or multi-generational family. The main floor is bright and welcoming, with a spacious living room, formal dining area, and an eat-in kitchen with bay window. Just a few steps down is a large family room with a wood-burning fireplace, patio doors to the yard, a fourth bedroom, and a half bath. Upstairs has three bedrooms, including a generous primary with walk-in closet and ensuite. The basement is finished with a rec room and space to add a second laundry. Major updates include a full renovation (2021), new roof (2023), and most windows replaced (2024). The pie-shaped lot offers a fenced yard, 24x24 garage, RV parking, and a front veranda. Located near schools and the Valley Line LRT, this is a great opportunity for modern living in an established neighbourhood.

Built in 1974

Essential Information

MLS® #	E4427808
Price	\$575,000
Bedrooms	6
Bathrooms	3.50
Full Baths	3



Half Baths	1
Square Footage	2,158
Acres	0.00
Year Built	1974
Type	Single Family
Sub-Type	Detached Single Family
Style	4 Level Split
Status	Active

Community Information

Address	714 Lee Ridge Road
Area	Edmonton
Subdivision	Lee Ridge
City	Edmonton
County	ALBERTA
Province	AB
Postal Code	T6K 0P2

Amenities

Amenities	On Street Parking, Deck, Detectors Smoke, Fire Pit, Gazebo, No Animal Home, No Smoking Home
Parking Spaces	2
Parking	Double Garage Detached

Interior

Interior Features	ensuite bathroom
Appliances	Dishwasher-Built-In, Dryer, Garage Opener, Hood Fan, Refrigerator, Storage Shed, Stove-Electric, Water Softener
Heating	Forced Air-1, Natural Gas
Stories	4
Has Basement	Yes
Basement	Full, Finished

Exterior

Exterior	Wood, Stone, Vinyl
Exterior Features	Back Lane, Fenced, Flat Site, Public Transportation, Schools
Roof	Asphalt Shingles
Construction	Wood, Stone, Vinyl
Foundation	Concrete Perimeter

Additional Information

Date Listed March 27th, 2025

Days on Market 14

Zoning Zone 29

DATA IS DEEMED RELIABLE BUT IS NOT GUARANTEED ACCURATE BY THE REALTORS® ASSOCIATION OF EDMONTON. COPYRIGHT 2025 BY THE REALTORS® ASSOCIATION OF EDMONTON. ALL RIGHTS RESERVED. Trademarks are owned or controlled by the Canadian Real Estate Association (CREA) and identify real estate professionals who are members of CREA (REALTOR®, REALTORS®) and/or the quality of services they provide (MLS®, Multiple Listing Service®)

Listing information last updated on April 9th, 2025 at 10:02pm MDT