

\$525,000 - 9343 86 Street, Edmonton

MLS® #E4428542

\$525,000

5 Bedroom, 2.00 Bathroom, 1,246 sqft
Single Family on 0.00 Acres

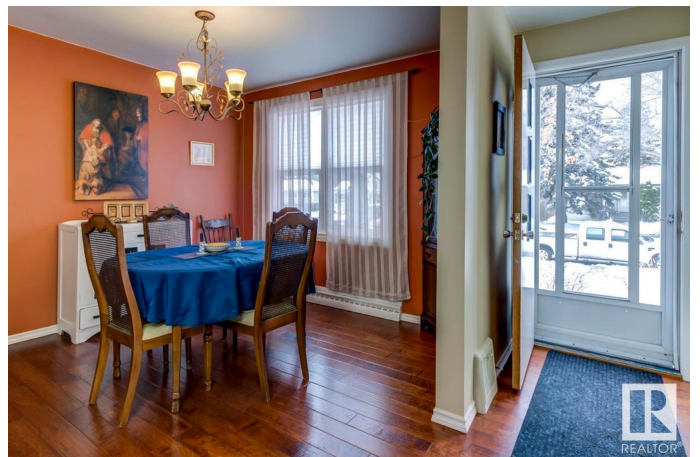
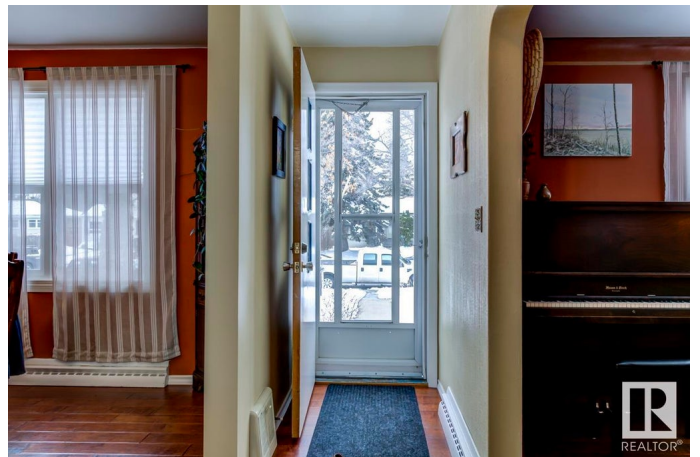
Strathearn, Edmonton, AB

Welcome to Strathearn! This charming 5-bed, 2-bath home features a spacious main floor with a bedroom, full bathroom, and an open kitchen/dining area. Upstairs, you'll find 2 more bedrooms. The versatile basement offers 2 rooms with egress windows, perfect for bedrooms, offices, or rec rooms, along with a modern bathroom. Outside, hidden by snow, is a permaculture paradise with perennials, fruit-bearing bushes, and trees. Enjoy the oversized double garage. Ideally located near LRT, downtown, the river valley, parks, trails, and universities, this home is in a mature neighborhood with tree-lined streets and scenic views of downtown, all just a stroll away. Your perfect home in an iconic area awaits!

Built in 1951

Essential Information

| | |
|----------------|-----------|
| MLS® # | E4428542 |
| Price | \$525,000 |
| Bedrooms | 5 |
| Bathrooms | 2.00 |
| Full Baths | 2 |
| Square Footage | 1,246 |
| Acres | 0.00 |
| Year Built | 1951 |



| | |
|----------|------------------------|
| Type | Single Family |
| Sub-Type | Detached Single Family |
| Style | 1 and Half Storey |
| Status | Active |

Community Information

| | |
|-------------|----------------|
| Address | 9343 86 Street |
| Area | Edmonton |
| Subdivision | Strathearn |
| City | Edmonton |
| County | ALBERTA |
| Province | AB |
| Postal Code | T6C 3E6 |

Amenities

| | |
|-----------|------------------------|
| Amenities | No Smoking Home |
| Parking | Double Garage Detached |

Interior

| | |
|--------------|--|
| Appliances | Dishwasher-Built-In, Dryer, Freezer, Microwave Hood Fan, Storage Shed, Stove-Electric, Washer, Window Coverings, Refrigerators-Two |
| Heating | Forced Air-1, Natural Gas |
| Fireplace | Yes |
| Fireplaces | Mantel |
| Stories | 3 |
| Has Basement | Yes |
| Basement | Full, Finished |

Exterior

| | |
|-------------------|---|
| Exterior | Wood, Stucco |
| Exterior Features | Back Lane, Fenced, Fruit Trees/Shrubs, Landscaped, Public Transportation, Ski Hill Nearby |
| Roof | Asphalt Shingles |
| Construction | Wood, Stucco |
| Foundation | Concrete Perimeter |

Additional Information

| | |
|----------------|-----------------|
| Date Listed | April 2nd, 2025 |
| Days on Market | 8 |

Zoning

Zone 18

DATA IS DEEMED RELIABLE BUT IS NOT GUARANTEED ACCURATE BY THE REALTORS® ASSOCIATION OF EDMONTON. COPYRIGHT 2025 BY THE REALTORS® ASSOCIATION OF EDMONTON. ALL RIGHTS RESERVED. Trademarks are owned or controlled by the Canadian Real Estate Association (CREA) and identify real estate professionals who are members of CREA (REALTOR®, REALTORS®) and/or the quality of services they provide (MLS®, Multiple Listing Service®)

Listing information last updated on April 9th, 2025 at 9:32pm MDT