

# **\$539,900 - 130 Chestermere Crescent, Sherwood Park**

MLS® #E4430379

**\$539,900**

3 Bedroom, 2.50 Bathroom, 1,729 sqft

Single Family on 0.00 Acres

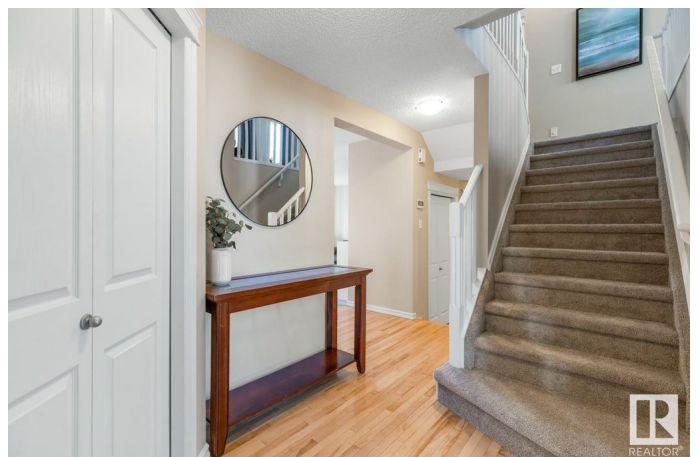
Lakeland Ridge, Sherwood Park, AB

Beautifully maintained family home located in Lakeland Ridge, just steps away from an array of amenities, featuring AC, 3 bedrooms, 2.5 baths, NEW ROOF, plus fresh paint & carpet! You are invited in to find a bright & spacious entry with hardwood floors that lead to the great room. The kitchen offers plenty of cabinets, corner pantry & island that looks over the dining & living room. Complementing the functional layout is a guest bath & main floor laundry. Moving upstairs you will LOVE the family sized bonus room with cozy fireplace. King sized primary suite with walk in closet & ensuite with soaker tub. 2 generous sized bedrooms & 4pc bath complete the upper level. The basement is unfinished, yet offers a great layout for future rec room, 4th bedroom plus storage! ENJOY the fenced & landscaped yard with deck. Enjoy all that Lakeland has to offer with multiple parks, trails plus steps away from schools, restaurants & shopping, making this the perfect place to call home!

Built in 2005

## **Essential Information**

MLS® #	E4430379
Price	\$539,900
Bedrooms	3
Bathrooms	2.50



Full Baths	2
Half Baths	1
Square Footage	1,729
Acres	0.00
Year Built	2005
Type	Single Family
Sub-Type	Detached Single Family
Style	2 Storey
Status	Active

### Community Information

Address	130 Chestermere Crescent
Area	Sherwood Park
Subdivision	Lakeland Ridge
City	Sherwood Park
County	ALBERTA
Province	AB
Postal Code	T8H 2W6

### Amenities

Amenities	Air Conditioner, Deck, No Animal Home, See Remarks
Parking	Double Garage Attached

### Interior

Interior Features	ensuite bathroom
Appliances	Air Conditioning-Central, Dishwasher-Built-In, Dryer, Garage Opener, Hood Fan, Oven-Microwave, Refrigerator, Stove-Electric, Washer, Window Coverings
Heating	Forced Air-1, Natural Gas
Fireplace	Yes
Fireplaces	Corner
Stories	2
Has Basement	Yes
Basement	Full, Unfinished

### Exterior

Exterior	Wood, Vinyl
Exterior Features	Fenced, Landscaped, Playground Nearby, Schools, Shopping Nearby, See Remarks

Roof	Asphalt Shingles
Construction	Wood, Vinyl
Foundation	Concrete Perimeter

### **School Information**

Elementary	LAKELAND RIDGE
Middle	LAKELAND RIDGE
High	SALISBURY COMP

### **Additional Information**

Date Listed	April 11th, 2025
Days on Market	10
Zoning	Zone 25

DATA IS DEEMED RELIABLE BUT IS NOT GUARANTEED ACCURATE BY THE REALTORS® ASSOCIATION OF EDMONTON. COPYRIGHT 2025 BY THE REALTORS® ASSOCIATION OF EDMONTON. ALL RIGHTS RESERVED. Trademarks are owned or controlled by the Canadian Real Estate Association (CREA) and identify real estate professionals who are members of CREA (REALTOR®, REALTORS®) and/or the quality of services they provide (MLS®, Multiple Listing Service®)

Listing information last updated on April 20th, 2025 at 9:31pm MDT